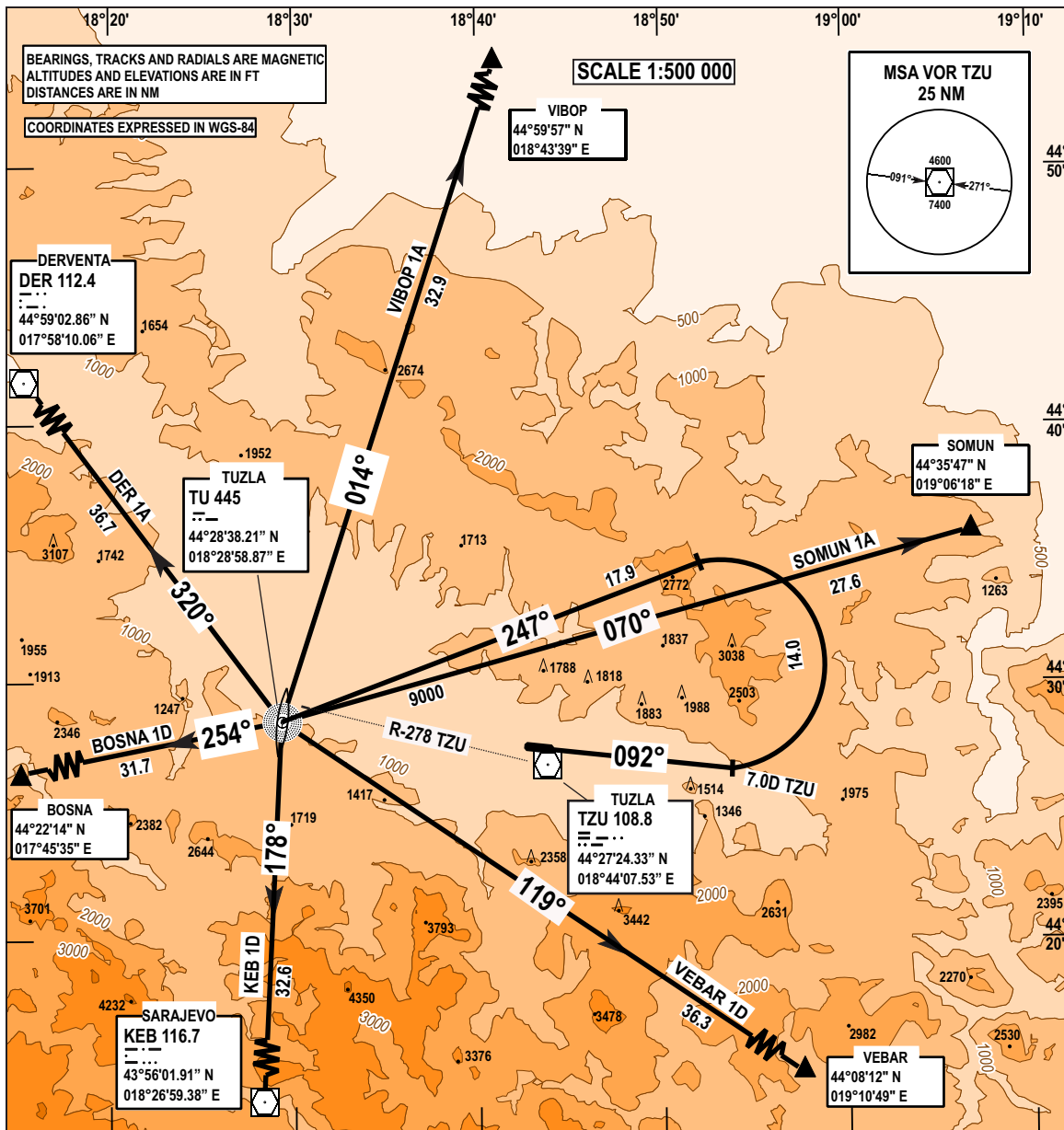


**STANDARD DEPARTURE CHART
INSTRUMENT (SID) - ICAO**

TRANSITION
ALTITUDE
10 000 FT
VAR 5° E (2020)

APP 120.350
TWR 132.925

**TUZLA (LQTZ)
RWY 09**



CHG: VEBAR 1A RENAMED TO VEBAR 1D ON CHART;

BOSNA 1D DEPARTURE - RWY09

Climb straight ahead. At 7.0D TZU turn left, intercept and follow TU QDM 247° to TU NDB, next BOSNA POINT.
Cross 7.0D TZU at or above 3100 ft and R-278 TZU at or above 9000 ft.
This procedure requires PDG of 5.4% until 3300 ft.

DER 1A DEPARTURE - RWY09

Climb straight ahead. At 7.0D TZU turn left, intercept and follow TU QDM 247° to TU NDB, next DER VORDME.
Cross 7.0D TZU at or above 3100 ft and R-278 TZU at or above 9000 ft.
This procedure requires PDG of 5.4% until 3300 ft.

VIBOP 1A DEPARTURE - RWY09

Climb straight ahead. At 7.0D TZU turn left, intercept and follow TU QDM 247° to TU NDB, next VIBOP POINT.
Cross 7.0D TZU at or above 3100 ft and R-278 TZU at or above 9000 ft.
This procedure requires PDG of 5.4% until 3300 ft.

SOMUN 1A DEPARTURE - RWY09

Climb straight ahead. At 7.0D TZU turn left, intercept and follow TU QDM 247° to TU NDB, next SOMUN POINT.
Cross 7.0D TZU at or above 3100 ft and R-278 TZU at or above 9000 ft.
This procedure requires PDG of 5.4% until 3300 ft.

KEB 1D DEPARTURE - RWY09

Climb straight ahead. At 7.0D TZU turn left, intercept and follow TU QDM 247° to TU NDB, next KEB VORDME.
Cross 7.0D TZU at or above 3100 ft and R-278 TZU at or above 9000 ft.
This procedure requires PDG of 5.4% until 3300 ft.

VEBAR 1D DEPARTURE - RWY09

Climb straight ahead. At 7.0D TZU turn left, intercept and follow TU QDM 247° to TU NDB, next VEBAR POINT.
Cross 7.0D TZU at or above 3100 ft and R-278 TZU at or above 9000 ft.
This procedure requires PDG of 5.4% until 3300 ft.

THIS PAGE INTENTIONALLY LEFT BLANK